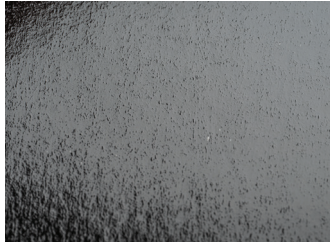


What we're made of.

Engineered films, adhesives, and liners.



Synthetic Rubber

Aggressive adhesive engineered for a superior bond to most surfaces in the harshest conditions.



Film & Laminate Backing

Resists tearing, conforms to surfaces, and withstands outdoor abuse.



Split-Liner Option (4 in)

Speeds up installs on wide seams and large repairs.

POLYKEN®

Set New Standards

POLYKEN®

For those who take pride in precision, Polyken has proven to produce what others promise.

We don't just push the limits of performance. We set them.

HIGH-ADHESIVE FILM TAPES



Field-tested brands.



The information presented herein was prepared at VYBOND GROUP, INC. (Vybond Group, Inc. 2320 Bowling Green Road, Franklin, KY 42134) by qualified technical personnel. To VYBOND's knowledge, it is true and accurate. However, the information and recommendations are furnished for these products with the understanding that the purchaser or user, as the case may be, will independently determine that the product is suitable for the intended use, and that such use complies with all applicable federal, state and local laws and regulations. The data are submitted only for the user's information and consideration, and do not constitute a warranty of any kind (including but not limited to a warranty of merchantability or of fitness for a particular purpose), or a representation for which VYBOND assumes any legal responsibility.

2320 Bowling Green Rd., Franklin, KY 42134 • 1-800-343-7875
Fax 1-800-328-4822 • vybond.com • 1202_11-25

HEAVY-DUTY TAPES FOR HEAVY-DUTY JOBS

Strength you can count on, no matter the surface.

Polyken 800 Series High-Adhesive Film Tapes are built for the toughest conditions, delivering permanent, waterproof bonds across concrete, metal, wood, and more.

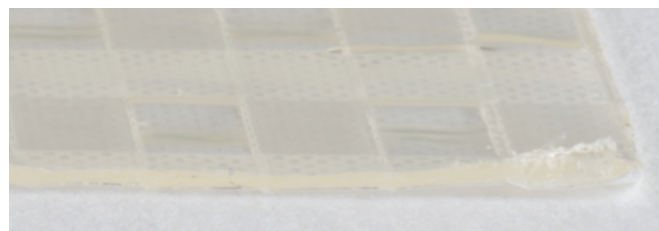
With rubber-based adhesives that stay pliable and flexible backings that conform to uneven surfaces, they seal, patch, and repair without slowing down the jobsite.

Designed to perform in water, weather, and extreme temperatures, the series gives contractors and distributors a single solution set for heavy-duty installs—indoors or out.

POLYKEN®

818 HEAVY-DUTY TURF TAPE

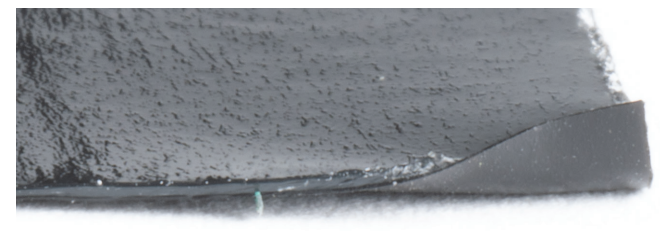
Holding power for high-traffic turfs. Joins seams fast with a split-back release liner. Durable liner adds flex and handling strength. Withstands weather and water for long-term outdoor installs.



BACKING	ADHESIVE
Woven PE	Rubber
OPERATING TEMPERATURE	TENSILE STRENGTH
-30 to 165 °F (-34 to 74 °C)	50 lb/in
APPLICATIONS	
Turf seams, playgrounds, golf, pet areas, high-wind installs	

820 MEGAGRIP™ PERMANENT WATERPROOF TAPE

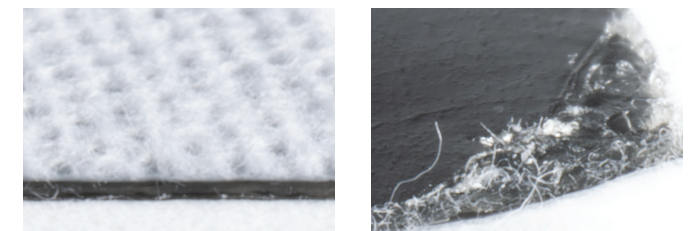
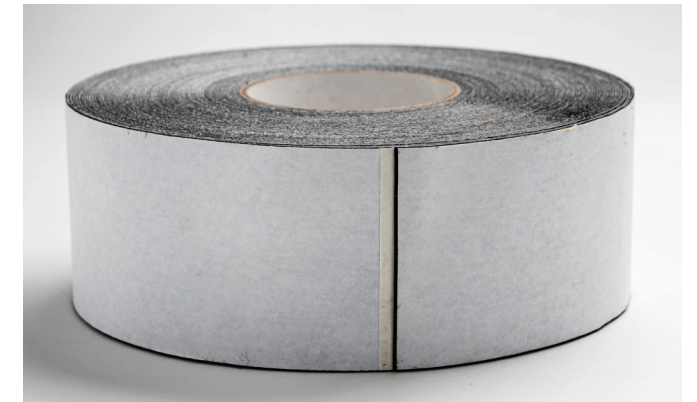
Seals out moisture. Very aggressive rubber adhesive grabs porous and rough surfaces—including concrete and gypsum-based products—works in damp locations like gutters. Also useful for repairing temporary shelters (carports, ag buildings, temp buildings).



BACKING	ADHESIVE
Polyethylene Film	Rubber
OPERATING TEMPERATURE	TENSILE STRENGTH
-30 to 165 °F (-34 to 74 °C)	10 lb/in
APPLICATIONS	
Securing, patching, sealing, bundling, waterproof repairs	

821C CONCRETE UNDERLAYMENT TAPE

Keeps vapor barriers and underlayments locked in place through all phases of construction. When placed before the pour, concrete bonds with the non-woven backing, stabilizing joints through expansion and contraction.



BACKING	ADHESIVE
Non-woven PE Laminate	Synthetic Rubber
OPERATING TEMPERATURE	TENSILE STRENGTH
-30 to 165 °F (-34 to 74 °C)	42 lb/in
APPLICATIONS	
Underlayment joints, vapor barrier sealing, foundation walls, soundproofing	



PRODUCT INFORMATION

	818	820	821C
Backing	Woven PE	Polyethylene Film	Non-woven PE laminate
Adhesive	Synthetic Rubber	Synthetic Rubber	Synthetic Rubber
Liner	Film	Film	Film
Thickness	20 mil	20 mil	30 mil
Adhesion to Steel	265 oz/in (29.0 N/cm)	300 oz/in (32.8 N/cm)	300 oz/in (32.8 N/cm)
Tensile Strength	50 lb/in	10 lb/in	42 lb/in
Operating Temp	-30 to 165°F (-34 to 74°C)	-30 to 165°F (-34 to 74°C)	-30 to 165°F (-34 to 74°C)
Colors	White	Black, White	White
Sizes	3 in, 4 in x 100 ft	3 in, 4 in x 100 ft	3 in, 4 in x 100 ft
ASTM	D-1000, PSTC-101	D-1000, F1249, PSTC-101	D-1000, F1249, PSTC-101