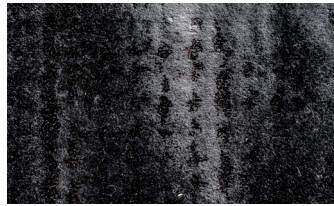


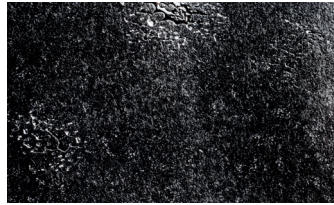
What we're made of.

Engineered backings, adhesives, and liners.



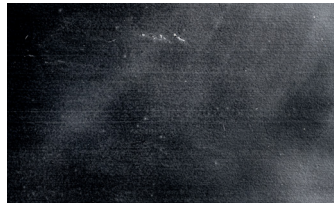
Butyl Adhesive

Pliable, rubber-like adhesive "flows" around rough cuts and fasteners, for a durable, watertight seal.



Acrylic Adhesive

Clean, pressure-activated adhesive. Long-term, UV-resistant, and watertight—when paired with film.



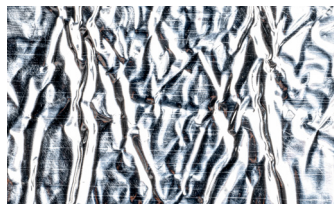
Film Backing

Smooth, clear PP film delivers waterproof protection and lays flat for inspection-friendly visibility and a finished look.



Woven Backing

Tough, tear-resistant PE carrier works on rough surfaces and endures jobsite abuse.



Foil Backing

Provides permanent UV protection for long-term terminations.



Self-Wound Acrylic Options

No-liner, pinked/serrated edge hand-tears for quicker starts, cleaner edges, and less waste.



AAMA 711-22 Tested Lineup

Verification for peel, UV, heat/cold, and water immersion—for dry openings and smooth inspections.

POLYKEN®

Set New Standards

POLYKEN®

For those who take pride in precision, Polyken has proven to produce what others promise.

We don't just push the limits of performance. We set them.

FLASHING TAPES

VYBOND™

Field-tested brands.

VYBOND™

The information presented herein was prepared at VYBOND GROUP, INC. (Vybond Group, Inc. 2320 Bowling Green Road, Franklin, KY 42134) by qualified technical personnel. To VYBOND's knowledge, it is true and accurate. However, the information and recommendations are furnished for these products with the understanding that the purchaser or user, as the case may be, will independently determine that the product is suitable for the intended use and that such use complies with all applicable federal, state, and local laws and regulations. The data are submitted only for the user's information and consideration and do not constitute a warranty of any kind (including but not limited to a warranty of merchantability or of fitness for a particular purpose) or a representation for which VYBOND assumes any legal responsibility.

2320 Bowling Green Rd., Franklin, KY 42134
1-800-343-7875 • Fax 1-800-328-4822
vybond.com • 1205_11-25

KEEP THE OUTSIDE OUTSIDE



Seal the deal on leaks.

Polyken® Flashing Tapes are engineered to protect openings and transitions from moisture and air intrusion—across a wide range of seasons and substrates.

Choose from butyl or acrylic adhesive systems and film or woven backings to match your install temps, inspection needs, and speed of application.

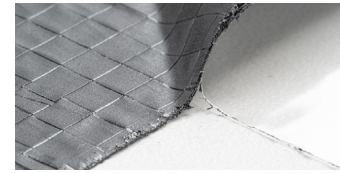
With options from value workhorse to clean, self-wound premium, the series makes it easy to pick the right tape.

POLYKEN®

RESIDENTIAL / LIGHT COMMERCIAL

620-13 UTILITY FLASHING

Fair-weather butyl value for standard openings.



ADHESIVE	CONSTRUCTION
Butyl	Black Woven
LOWEST INSTALL TEMP.	GRADE
30°F	Standard
APPLICATION	
Window and door flashing	

630-14 SHADOW-LASTIC™ EXTREME

Cold-grade butyl value for standard openings.



ADHESIVE	CONSTRUCTION
Butyl	Black Woven
LOWEST INSTALL TEMP.	GRADE
10°F	Standard
APPLICATION	
Window and door flashing	

640-14 SHADOW-LASTIC ARCTIC

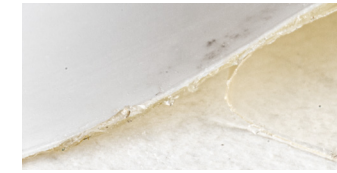
Wall-grade, zero-degree butyl for standard vertical openings.



ADHESIVE	CONSTRUCTION
Clear Butyl	White Woven
LOWEST INSTALL TEMP.	GRADE
0°F	Standard
APPLICATION	
Window and door flashing	

641-17 LOW-PROFILE FLASHING

Premium, clear, zero-degree, film-backed butyl for clarity.



ADHESIVE	CONSTRUCTION
Clear Butyl	White Film
LOWEST INSTALL TEMP.	GRADE
0°F	Premium
APPLICATION	
Window and door flashing	

790-SW FLASH AND SEAM

Clear, low-temp acrylic for inspection-friendly applications.



ADHESIVE	CONSTRUCTION
Acrylic	Black, Clear, White Film
LOWEST INSTALL TEMP.	GRADE
20°F	Standard
APPLICATION	
Window and door flashing; wall panel seaming	

791-SW ALL IN ONE

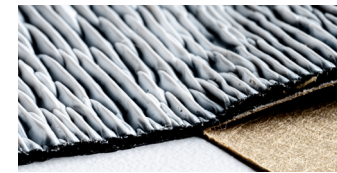
Roof-grade, clear, low-temp acrylic for all flashing applications.



ADHESIVE	CONSTRUCTION
Acrylic	Clear Film
LOWEST INSTALL TEMP.	GRADE
20°F	Roof Grade
APPLICATION	
Window and door flashing; wall and roof panel seaming	

797-50 FLEX 'N STRETCH

Flexible, creped, fair-weather butyl for irregular surfaces and corners.



ADHESIVE	CONSTRUCTION
Butyl	Black Crepe
LOWEST INSTALL TEMP.	GRADE
30°F	Conformable
APPLICATION	
Stretchable for sill pans, arched windows, and thru-wall penetrations	

AVAILABLE SIZES

Standard 4-, 6-, 9-inch wide x 75 feet available for all tapes. For specialty sizes, contact your local sales rep.

	620-13	630-14	640-14
Adhesive Type	Butyl	Butyl	Butyl
Adhesive Thickness	9 mils	10 mils	10 mils
Backing Type	Woven PE	Woven PE	Woven PE
Backing Color(s)	Black, White	Black, White	Gray, White
Backing Thickness	4.5 mils	4.5 mils	4.5 mils
Total Thickness (Backing + Adhesive)	13.5 mils	14.5 mils	14.5 mils
Release Liner	PET	PET or Kraft	PET
Installation Temp. Range WITHOUT Primer	30°F – 180°F	10°F – 180°F	0°F – 180°F
Operating/Service Temp. Range	-30°F – 200°F	-30°F – 200°F	-30°F – 200°F
UV Exposure	365 Days	3 years	180 Days

	641-17	790-SW	791-SW	797-50
Adhesive Type	Butyl	Acrylic	Acrylic	Butyl
Adhesive Thickness	10 mils	4.5 mils	9 mils	50 mils
Backing Type	PP Flat Film	PP Flat Film	PP Flat Film	Creped HDPE
Backing Color(s)	White	Black, Clear, White (PL only)	White	White
Backing Thickness	7.5 mils	5 mils	6.5 mils	Variable (creped)
Total Thickness (Backing + Adhesive)	17.5 mils	9.5 mils	15.5 mils	50 mils
Release Liner	PET	Self-Wound or PET	Self-Wound or PET	Kraft
Installation Temp. Range WITHOUT Primer	0°F – 180°F	20°F – 180°F	20°F – 180°F	30°F – 180°F
Operating/Service Temp. Range	-30°F – 200°F	-30°F – 200°F	-30°F – 200°F	-30°F – 200°F
UV Exposure	365 Days	200 Days	365 Days	365 Days

INDUSTRIAL / COMMERCIAL

626-20 FOILASTIC 20™

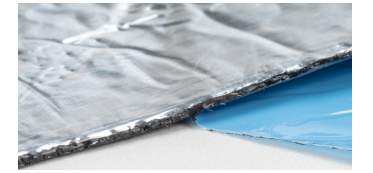
Entry-level, foil-backed butyl, for all fair-weather vertical applications.



ADHESIVE	CONSTRUCTION
Butyl	Foil
LOWEST INSTALL TEMP.	GRADE
30°F	Utility
APPLICATION	
Window and door flashing	

626-35 FOILASTIC 35™

Heavy-duty, roof-grade, foil-backed butyl for fair-weather applications.



ADHESIVE	CONSTRUCTION
Butyl	Foil
LOWEST INSTALL TEMP.	GRADE
30°F	Heavy Duty
APPLICATION	
Window and door flashing; ice, water, and roof flashing; gap bridging; thru-wall flashing	

627-20 SHADOWLASTIC 20

Entry-level woven PE-backed butyl for fair-weather utility/repair.



ADHESIVE	CONSTRUCTION
Butyl	Black Woven
LOWEST INSTALL TEMP.	GRADE
30°F	Utility
APPLICATION	
Window and door flashing	

627-35 SHADOWLASTIC 35

Premium woven PE-backed butyl for roof and wall terminations.



ADHESIVE	CONSTRUCTION
Butyl	Black Woven
LOWEST INSTALL TEMP.	GRADE
30°F	Heavy Duty
APPLICATION	
Window and door flashing; ice, water, and roof flashing; gap bridging; thru-wall flashing	

	626-20	626-35	627-20	627-35
Adhesive Type	Butyl	Butyl	Butyl	Butyl
Adhesive Thickness	15 mils	33 mils	15 mils	31 mils
Backing Type	Foil	Foil	Woven PE	Woven PE
Backing Color(s)	Silver	Silver	Black	Black
Backing Thickness	2 mils	2 mils	5 mils	4 mils
Total Thickness (Backing + Adhesive)	17 mils	35 mils	20 mils	35 mils
Release Liner	Kraft	PET	Kraft	Kraft
Installation Temp. Range WITHOUT Primer	30°F – 180°F	30°F – 180°F	30°F – 180°F	30°F – 180°F
Operating/Service Temp. Range	-30°F – 200°F	-30°F – 200°F	-30°F – 200°F	-30°F – 200°F
UV Exposure	Indefinite	Indefinite	3 years	3 years

Country of origin: USA. Shelf life: 36 months.